

ENGLISH

# EDGELOC<sup>®</sup> Hidden Fastener

## INSTALLATION INSTRUCTIONS & HELPFUL TIPS

EDGELOC Hidden Fasteners were designed exclusively to install TimberTech EDGE Premier, Prime and Prime+ grooved boards.

Always be sure to check and cut the factory cut ends of all boards to ensure they are square.

**IMPORTANT!** Read all instructions carefully and completely to ensure proper installation.

**WARNING!** Parts have sharp points and edges. Use caution when handling and installing.

**COVERAGE:** For approximate clips required, multiply the square feet of decking by 1.75 (Example: 100 sq. ft. X 1.75 = 175 clips)

### ADDITIONAL INFORMATION

- In areas with obstructed airflow, such as roofs and on-grade applications, a minimum of 1-1/2" sleeper system is required.
- Sleeper system must be supported by and connected to the substructure over which the deck is built.
- To further minimize expansion and contraction, proper ventilation and airflow should be considered.
- To aid water run-off the deck should slope 1/2" for every 8' away from the house.
- Do not use EDGELOC Hidden Fasteners for stair installations.
- When top-down fastening TimberTech composite decking:
  - Fasten no closer than 3/4" from outside edge of each board.
  - Pre-drilling is required when within 1-1/2" of the ends of the board and for temperatures below 45 degrees F.

## INSTALLATION PROCESS

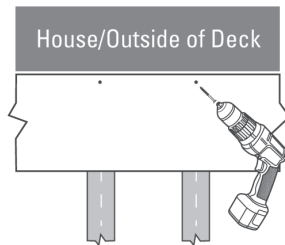
**TOOLS & REQUIRED:** • Safety glasses • 18V variable speed cordless drill (Speed & torque limit set to low for best results)

### 1 INSTALL THE FIRST PLANK

Recommended fasteners include Cortex<sup>®</sup> hidden fasteners and TOPLoc<sup>®</sup> color-matched deck fasteners. Follow TimberTech predrilling guidelines for the selected fastener.

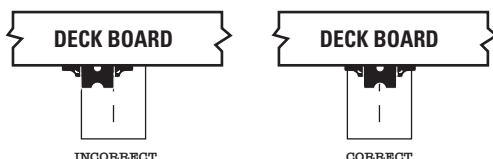
**WARNING:**

Cortex screws cannot be used with scalloped profile boards.



### 2 POSITION EDGELOC FASTENERS

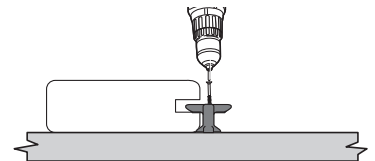
- Fully insert the EDGELOC fastener into grooved edge of plank. Screw hole should be lined up with the center of the support joist.



### 3 BEGIN DRIVING SCREW

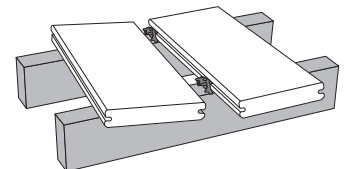
- Use an 18V Cordless drill in the low speed and low torque setting.
- Drive preset screw at a 90° angle through the clip until first contact with the deck board - **DO NOT OVERTIGHTEN.**
- Apply downward pressure on the decking while driving the screw.
- Pull the remaining clips off the installed clip to sever the collation.

**IMPORTANT TIP:** Do not overdrive the clip. This will make next board entry difficult. Leaving the clip slightly loose will allow you to apply the next board and tighten previous row of clips.



### 4 INSTALL NEXT BOARD

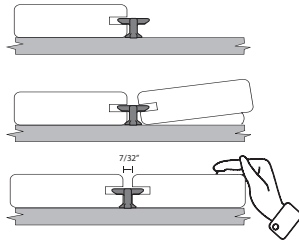
- Place the next plank into position against the installed clips. Slightly raise the outer edge of the plank being installed and slide it onto the clips.
- Tapping the board onto the clips may be required to achieve the desired gap. Use a scrap piece of lumber against the side of the deck plank. Do not use a hammer on the side of the deck plank as damage may occur.
- Do not overdrive- clips are self spacing.



INSTALLATION PROCESS

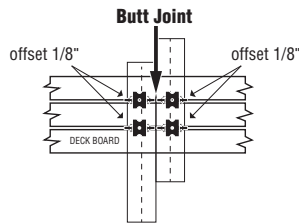
**5 COMPLETING BOARD INSTALLATION**

- Check gapping between boards for consistency. Apply hand pressure to ensure board is fully installed.
- With the next board installed, go back and tighten the previous row of clips.
- To complete the installation, recheck all connections and tighten the loose clips.
- Repeat steps until deck is complete.
- The last deck board will need to have the outside edge attached using Cortex or TOPLoc fasteners.
- It may be necessary to rip the last board to fit.



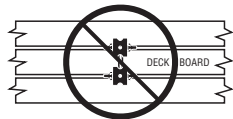
**6 HOW TO INSTALL AT BUTT JOINTS**

- Joists at butt joints must be doubled up for proper fastener attachment.
- Install fasteners as detailed in illustration. Note that the left and right clips have been placed approximately 1/8" offset from center to accommodate the legs of the clips.



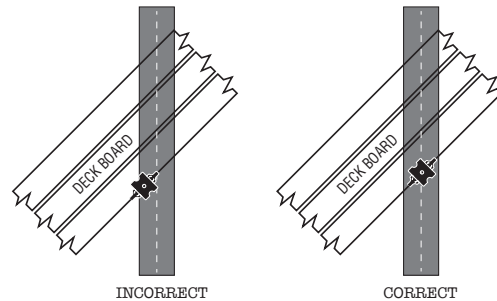
**WARNING:**

Do not use 2 clips only at butt joints



**7 HOW TO INSTALL ON ANGLES**

- When the deck is located in a corner of the house, start with a small triangular piece of decking in the corner and work your way out.
- It is important to center the clip on the joist for proper installation.



**8 REMOVING AND REPLACING A DECK BOARD**

- Remove the screws on both sides of board to be replaced using the provided T15 bit.
- Take care to not damage the deck boards on either side of the gap.
- You can now pry up your deck board without damage.
- Before installing a new board, clear all debris from the top of the exposed joist.
- To replace a board, install EDGELoc clips into one side of the exposed grooves. The clips should be left just slightly loose to facilitate installation of the subsequent deck board.
- Once the board is set into position, use EDGELoc Clips, Cortex or TOPLoc to fasten the remaining edge of the replacement board.

**WARNING:**

Cortex cannot be used with scalloped profile boards.