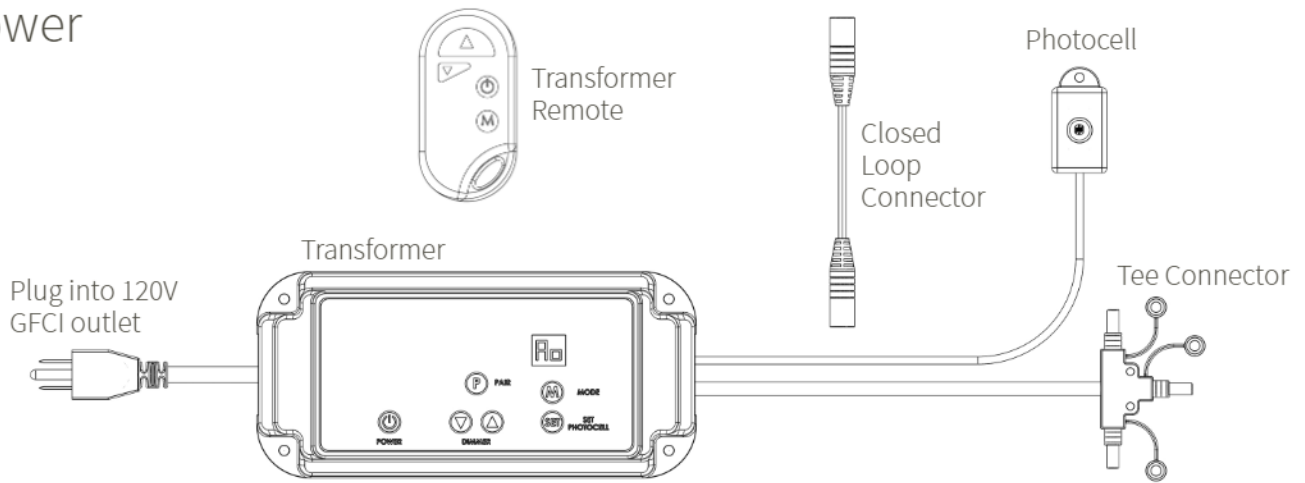


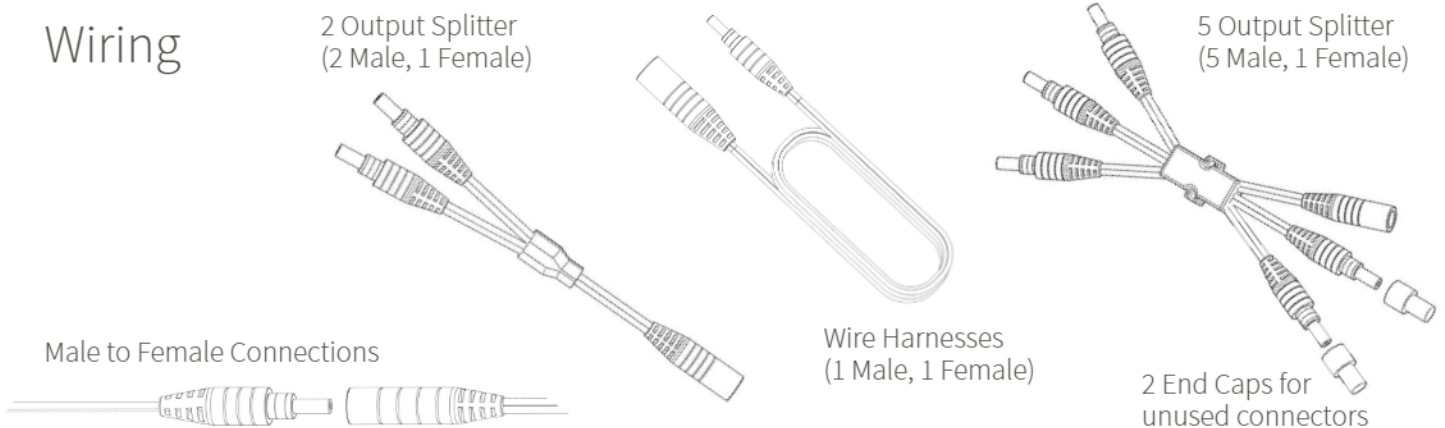
# Lighting Descriptions



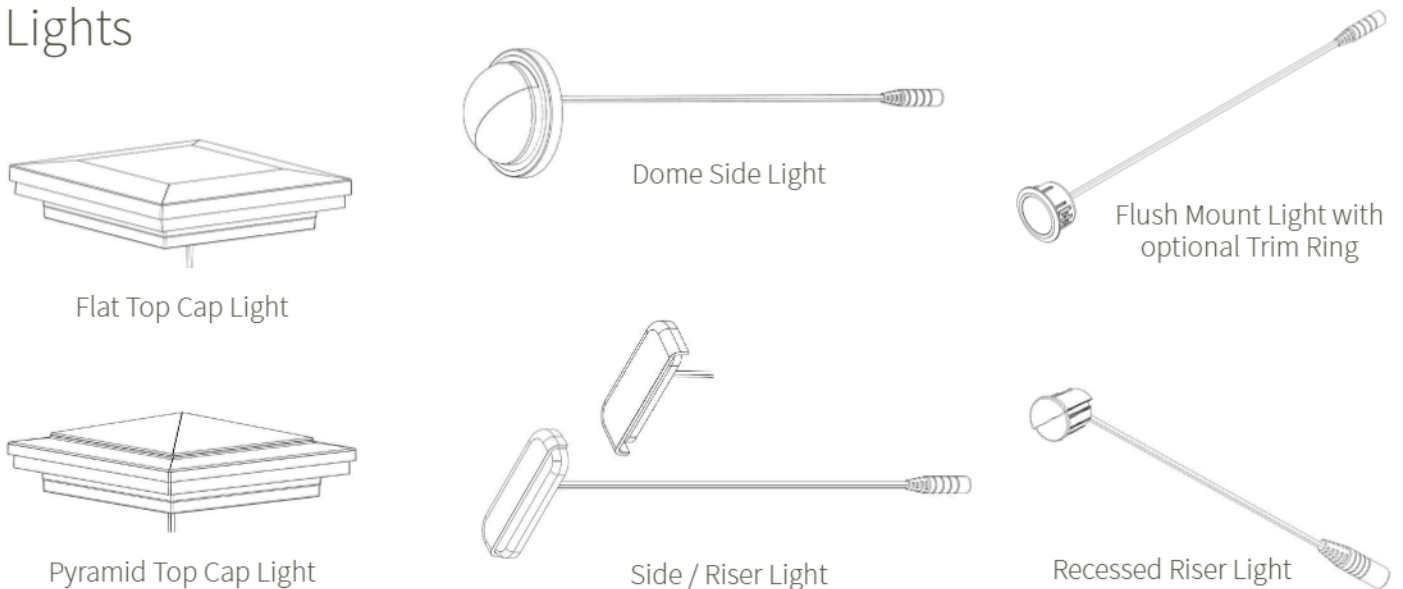
## Power



## Wiring



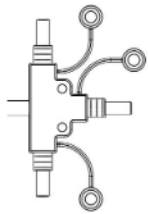
## Lights



# Installation Diagrams



## How to Connect Product Wiring



Tee Connector to Harness

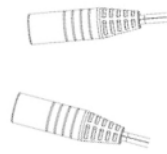


Closed Loop Connector to Tee Connector (Optional)

Harness to Output Splitter



Output Splitter to fixture Lead Wire



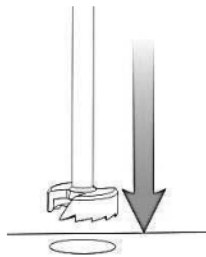
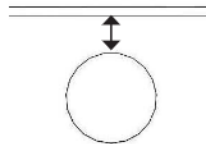
Harness to Closed Loop Connector (Optional)

Wiring can be run underneath the deck (above ground) and / or inside the post / railing where it is hidden from view. A 1/2 in. diameter hole will be required to feed the wire through.

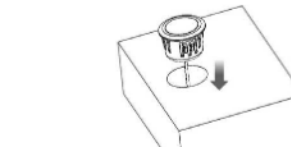
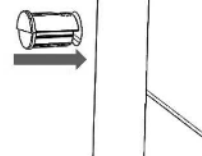
## Lights

Recessed & Flush Mount Lights

Drill hole minimum 1/2 in. from edge

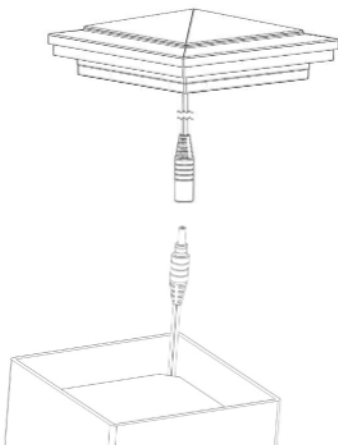


7/8 in. Diameter Forstner Bit for Recessed Riser



1-1/4 in. Diameter Forstner Bit with trim ring and 1 in. Diameter Forstner Bit without trim ring for Flush Deck Mount.

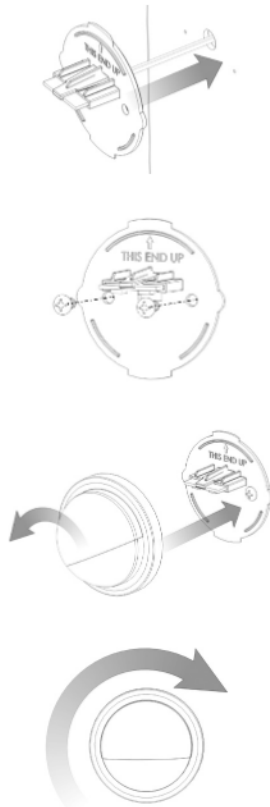
### Cap Lights



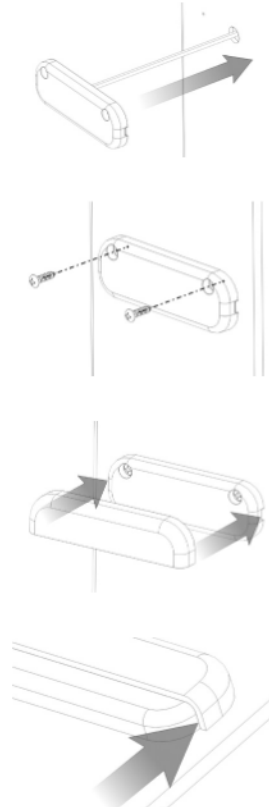
Permanently secure cap to post (optional):

Apply a bead of clear exterior silicone caulking (not supplied) around the top exterior perimeter of the post where the Post Cap Light will be attached. Place the connected, confirmed working Post Cap Light onto the post where sealant was added.

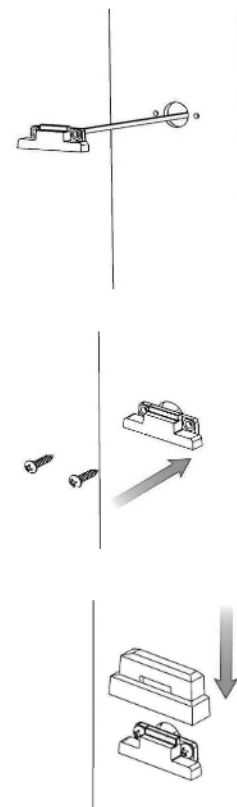
### Dome Side Light

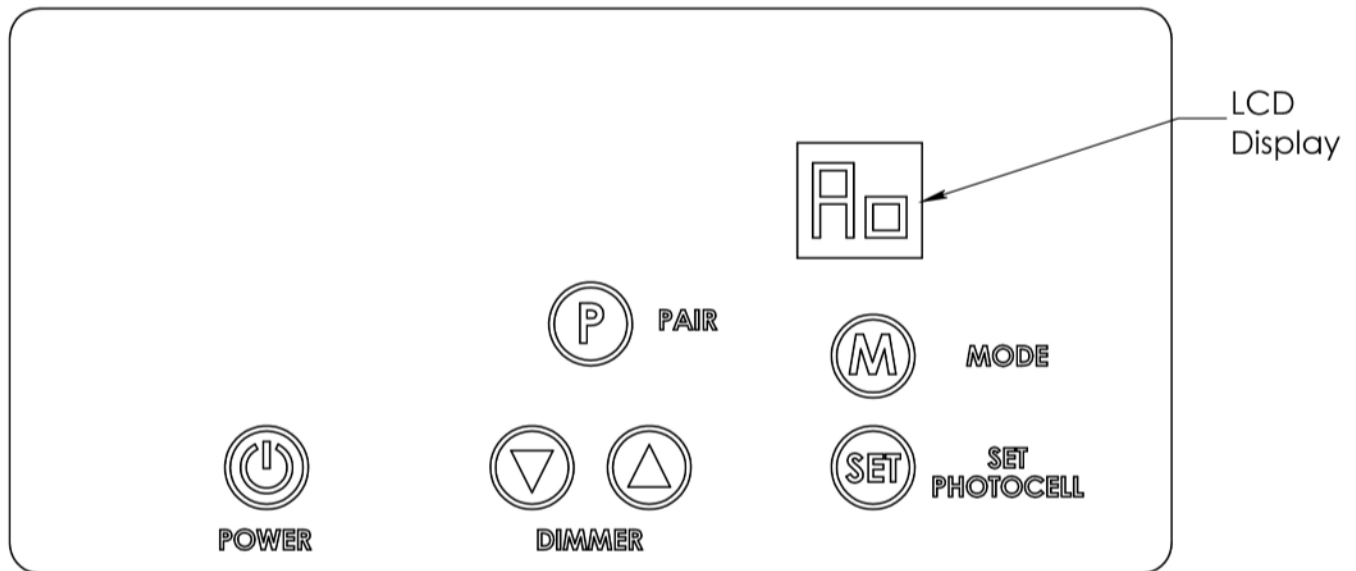


### Side / Riser Light



### Ornamental Side Light





**POWER**

## Power

Turns the system power off and on. When the system power is off, the LCD display will be blank and the only button that will function is the power button. When the system power is on, the LCD display will show the current mode or function that is active.



## Mode and LCD Display

Pressing or holding in the mode button will cycle through the different modes settings. The mode settings are 1h, 2h, 3h, 4h, 5h, 6h, 7h, 8h, dd and A□.



**MODE**

1 to 8 hour timer ( 1h, 2h, 3h, 4h, 5h, 6h, 7h, 8h)

- Uses the photocell to turn the lights on. When the photocell senses darkness continually for 30 to 40 seconds, the lights will turn on.
- The lights shut off after the set time expires (1 hour for 1h mode, 2 hours for 2h, etc.).
- After the set time expires the lights will remain off.
- Whether the timer has expired or is still active, when the photocell senses light continually for 30 to 40 seconds, the timer will be reset and ready for another cycle. If the lights are on, they will be shut off and the timer is reset.

Dusk to Dawn (dd)

- Uses the photocell to turn the lights on. When the photocell senses darkness continually for 30 to 40 seconds, it will turn on the lights.
- The lights will remain on until the photocell senses light continually for 30 to 40 seconds.
- When the photocell senses light continually for 30 to 40 seconds the lights will be shut off and ready for another cycle.

Always On (A□)

- The lights are on all the time. The photocell is not used.



**DIMMER**

## Dimmer

- Pressing or holding in the up button (▲) will make the lights brighter. If the lights are full brightness and the button is pressed again (or held in), the lights will flicker or flash to indicate the lights are at the brightest setting.
- Pressing or holding in the down button (▼) will make the lights dimmer. If the lights are dimmed to the lowest setting and the button is pressed again (or held in), the lights will flicker or flash to indicate the lights are at the dimmest setting.
- The dimmer buttons are only operational when the output lights are on.



## Pair

Pairs a new wireless remote control.

To pair a new wireless remote (the included remote is already paired at the factory):

- Press and hold the pair button on the transformer. At the same time press and hold the **M** button on the new remote. The LCD display will show **rL** to indicate that it is in remote pairing mode.
- Continue holding both buttons in for 8 to 10 seconds. When the new remote is paired, the output lights will flash or flicker. The transformer will cycle through the different modes until both buttons are released.

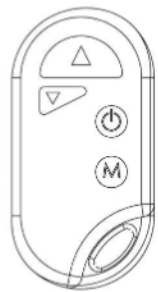


## Set Photocell

Sets the trigger point for turning the lights on and off.

To set the photocell level:

- Ensure mode is set to **1h, 2h, 3h, 4h, 5h, 6h, 7h, 8h, or dd**. The set photocell button will only work when in these modes.
- Wait until the ambient outdoor light condition is at the desired level for when the lights are to come on (dusk).
- Press and continue to hold the Set Photocell button for 10 to 15 seconds. The LCD display will change to **PS**.
- The lights will flash or flicker once the new photocell setting has been saved.
- The set photocell button can be released. The LCD display will return to the previous setting.
- The lights will turn on in 30 to 40 seconds as long as the ambient light condition is lower than when it was set.



## Remote Control

Controls the transformer remotely. Functions are the same as the transformer buttons.

- **▲** - Brightens the lights if they are on.
- **▼** - Dims the lights if they are on.
- **⏻** - Turns the system power off and on.
- **M** - Changes the transformer mode.
- Pressing both **▼** and **M** in at the same time will put the transformer into Bluetooth pairing mode (see above). The LCD display will show **bL** and no other functions will work for 30 seconds or until a new device is paired.

## Additional Features

### System Memory

- Previous settings are saved if power is lost. Settings are saved 30 seconds after the last settings change.
- Saved settings include: system power (on or off), transformer mode, photocell trigger point, dimming level and wireless remote codes (up to three different remotes can be paired at one time).

### Overload Protection

- The transformer can sense an overload condition. When this occurs, the lights will shut off and the LCD display will show **OL**. This can be caused by having too many lights attached or a pinched wire causing a short circuit.
- Pressing the power button twice will return the transformer to the previous mode. The system will then continue to check for an overload condition every 10 seconds.

### Over Temperature Protection

- The transformer can sense an unsafe internal temperature condition. When this occurs, the lights will shut off and the LCD display will show **OT**. This can be caused by having the transformer too close to an external heat source.
- The transformer will automatically restart once the temperature has returned to a safe level. The system will continue to check for an over temperature condition every 10 seconds.

### Factory Reset

- Unplug the transformer for at least 10 seconds. Holding the power button in while plugging in the transformer will force the transformer to return to factory settings. The power button can be released once the transformer turns on (the LCD display will show **F0** since this is the default mode). All settings will return to factory default. Any Bluetooth devices or replacement remote controls will need to be paired again. The original remote control will not need to be paired again.

